

株式分析 Stock Analysis

1 所有者別状況 Distribution of shares by type of shareholder

会計年度 FY	株主数 Number of Shareholders			所有株式数(千株) Number of Shares (thousand)		
	08.3	13.3	18.3	08.3	13.3	18.3
政府及び地方公共団体 Public bodies	2 (0.0%)	2 (0.0%)	2 (0.0%)	6 (0.0%)	6 (0.0%)	6 (0.0%)
銀行及び保険会社 Banks and insurance companies	170 (0.1%)	161 (0.1%)	140 (0.1%)	151,649 (35.1%)	147,821 (35.5%)	164,720 (39.5%)
証券会社 Security companies	58 (0.0%)	51 (0.0%)	41 (0.0%)	4,129 (1.0%)	5,530 (1.3%)	7,203 (1.7%)
その他の法人 Other businesses	1,060 (0.6%)	947 (0.7%)	801 (0.7%)	42,376 (9.8%)	33,437 (8.0%)	30,568 (7.3%)
外国人 Non-Japanese	445 (0.3%)	495 (0.3%)	662 (0.6%)	92,797 (21.5%)	101,297 (24.3%)	110,625 (26.5%)
個人その他 Individuals and others	164,958 (99.0%)	139,944 (98.8%)	107,886 (98.5%)	140,347 (32.5%)	128,329 (30.8%)	102,728 (24.7%)
自己名義株式 Treasury stocks	1 (0.0%)	1 (0.0%)	1 (0.0%)	373 (0.1%)	260 (0.1%)	830 (0.2%)
計 Total	166,694 (100.0%)	141,601 (100.0%)	109,533 (100.0%)	431,677 (100.0%)	416,680 (100.0%)	416,680 (100.0%)

※2017.3以前は、2017.10の株式併合影響(5→1株)を考慮して算定

Prior to March 2017, calculated based on the assumption of the share consolidation in October 2017. (5 share to 1 share)

※単元未満株式含む Including fractional shares

2 所有数別状況 Distribution of shares by size of holding

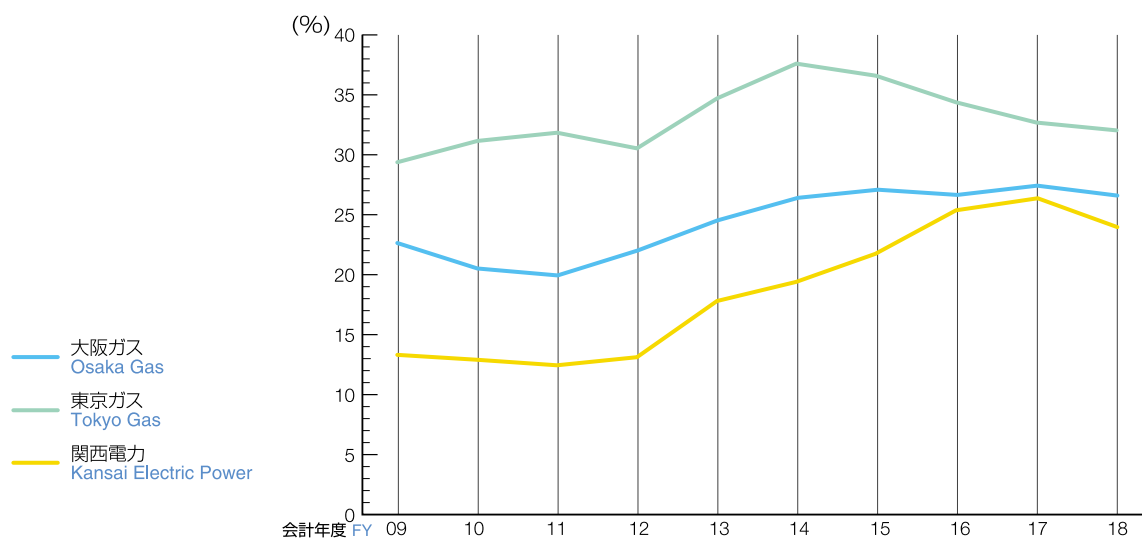
会計年度 FY	株主数 Number of Shareholders			所有株式数(千株) Number of Shares (thousand)		
	08.3	13.3	18.3	08.3	13.3	18.3
100,000~	287 (0.2%)	292 (0.2%)	286 (0.3%)	276,140 (64.0%)	280,360 (67.3%)	301,913 (72.5%)
10,000~	1,062 (0.6%)	1,062 (0.7%)	1,049 (1.0%)	25,993 (6.0%)	25,313 (6.1%)	26,258 (6.3%)
1,000~	43,346 (26.0%)	36,843 (26.0%)	28,959 (26.4%)	94,860 (22.0%)	81,368 (19.5%)	64,626 (15.5%)
~ 999	121,999 (73.2%)	103,404 (73.0%)	79,239 (72.3%)	34,683 (8.0%)	29,638 (7.1%)	23,883 (5.7%)
計 Total	166,694 (100.0%)	141,601 (100.0%)	109,533 (100.0%)	431,677 (100.0%)	416,680 (100.0%)	416,680 (100.0%)

※2017.3以前は、2017.10の株式併合影響(5→1株)を考慮して算定

Prior to March 2017, calculated based on the assumption of the share consolidation in October 2017. (5 share to 1 share)

※単元未満株式含む Including fractional shares

3 外国人持株比率 Percentage of shares held by non-Japanese shareholders



会計年度 FY	09.3	10.3	11.3	12.3	13.3	14.3	15.3	16.3	17.3	18.3
大阪ガス Osaka Gas	22.6	20.5	20.0	22.0	24.5	26.4	27.1	26.7	27.4	26.6
東京ガス Tokyo Gas	29.3	31.1	31.8	30.6	34.7	37.6	36.6	34.3	32.7	32.0
関西電力 Kansai Electric Power	13.4	12.9	12.4	13.1	16.8	19.4	21.7	25.2	26.3	24.0

※単元未満株式除く Excluding fractional shares

4 配当状況 Dividends payment

会計年度 FY	09.3	10.3	11.3	12.3	13.3	14.3	15.3	16.3	17.3	18.3
一株当たり 年間配当金 (円) Annual dividends per share (yen)	35.0	35.0	40.0	40.0	42.5	45.0	47.5	50.0	50.0	50.0

※2017.3以前は、2017.10の株式併合影響(5→1株)を考慮して算定
Prior to March 2017, calculated based on the assumption of the share consolidation in October 2017. (5 share to 1 share)

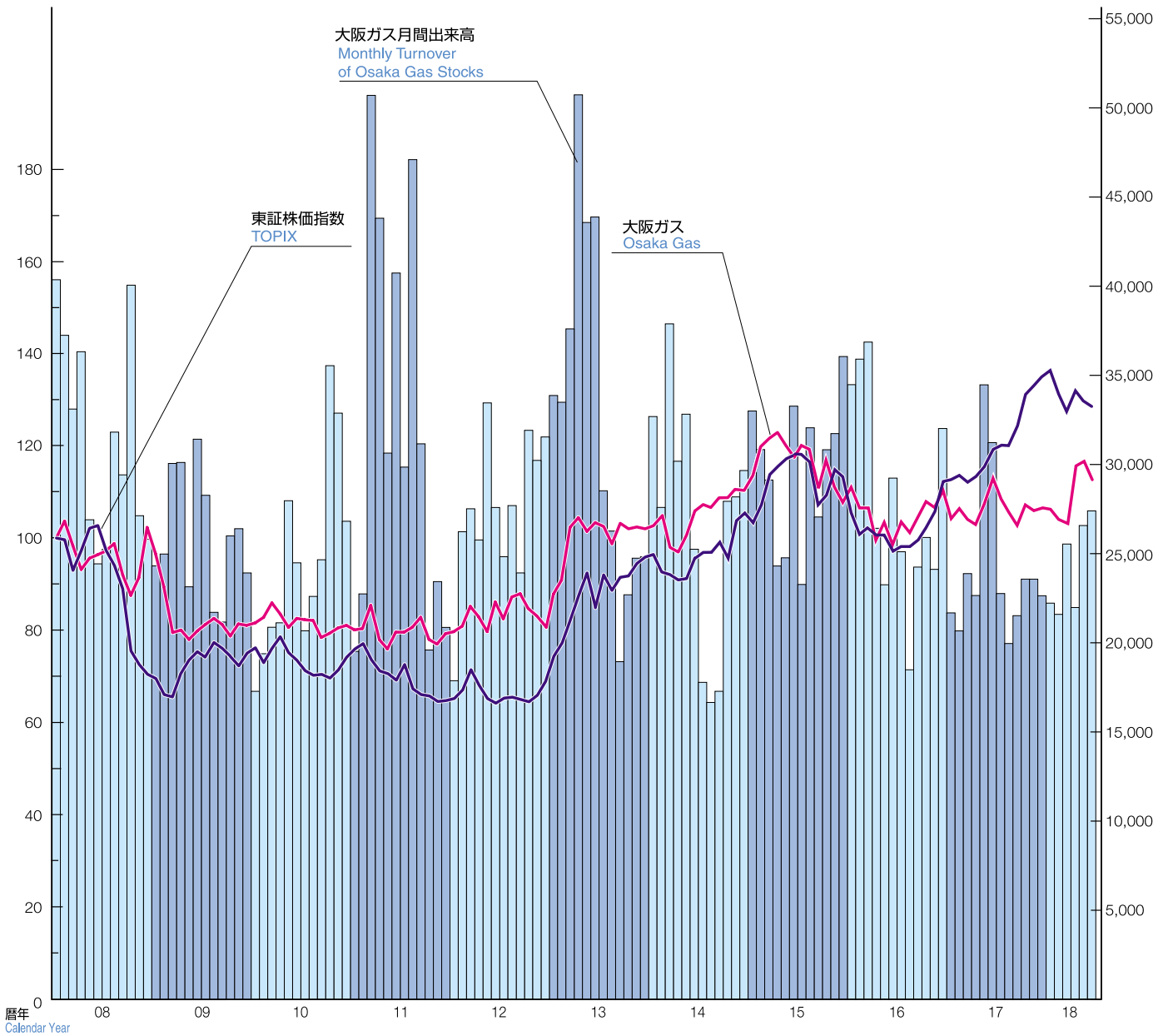
5 自己株式取得状況 Share buy-back

会計年度 FY	09.3	10.3	11.3	12.3	13.3	14.3	15.3	16.3	17.3	18.3
自己株式 買付総額 (億円) Total value of shares repurchased (100 million yen)	0	0	200	0	0	0	0	0	0	0

6 株価推移 Stock price fluctuation

株価インデックス Stock price index (2007年1月=100 January 2007=100)

出来高 Turnover (千株 thousand shares)



株式情報

株価データ Stock price data

暦年 Calendar year		09	10	11	12	13	14	15	16	17	18
大阪ガス Osaka Gas (円/株) (yen/stock)	高値 High	2,110.0	1,700.0	1,670.0	1,750.0	2,435.0	2,330.0	2,667.5	2,338.5	2,348.5	2,431.5
	安値 Low	1,440.0	1,390.0	1,325.0	1,495.0	1,575.0	1,850.0	2,105.0	1,802.0	2,056.0	1,993.5
東証株価指数 TOPIX	高値 High	975.6	998.9	974.6	872.4	1,302.3	1,447.6	1,691.3	1,552.4	1,831.9	1,911.1
	安値 Low	700.9	803.1	706.1	695.5	871.9	1,132.8	1,358.0	1,196.3	1,459.1	1,664.9
大阪ガス年間出来高 (千株) Annual turnover of Osaka Gas stocks (thousand)		311,514	294,251	380,108	328,548	389,161	323,830	356,300	336,060	288,258	148,232

※2018年は6月まで Until June 2018

※2017以前は、2017.10の株式併合影響(5→1株)を考慮して算定

Prior to 2017, calculated based on the assumption of the share consolidation in October 2017. (5 share to 1 share)

会計年度 FY		09.3	10.3	11.3	12.3	13.3	14.3	15.3	16.3	17.3	18.3
大阪ガス年度末終値 (円/株) Osaka Gas Stock price at Fiscal Year end (yen/stock)		1,540.0	1,675.0	1,660.0	1,660.0	2,070.0	1,955.0	2,513.5	2,162.0	2,115.0	2,099.5

※2017.3以前は、2017.10の株式併合影響(5→1株)を考慮して算定

Prior to March 2017, calculated based on the assumption of the share consolidation in October 2017. (5 share to 1 share)