

株式分析 Stock Analysis

1 所有者別状況 Distribution of shares by type of shareholder

| 会計年度 FY | 株主数 Number of Shareholders | | | 所有株式数(千株) Number of Shares (thousand) | | |
|---|----------------------------|------------------|------------------|---------------------------------------|------------------|------------------|
| | 08.3 | 13.3 | 18.3 | 08.3 | 13.3 | 18.3 |
| 政府及び地方公共団体 Public bodies | 2 (0.0%) | 2 (0.0%) | 2 (0.0%) | 6 (0.0%) | 6 (0.0%) | 6 (0.0%) |
| 銀行及び保険会社 Banks and insurance companies | 170 (0.1%) | 161 (0.1%) | 140 (0.1%) | 151,649 (35.1%) | 147,821 (35.5%) | 164,720 (39.5%) |
| 証券会社 Security companies | 58 (0.0%) | 51 (0.0%) | 41 (0.0%) | 4,129 (1.0%) | 5,530 (1.3%) | 7,203 (1.7%) |
| その他の法人 Other businesses | 1,060 (0.6%) | 947 (0.7%) | 801 (0.7%) | 42,376 (9.8%) | 33,437 (8.0%) | 30,568 (7.3%) |
| 外国人 Non-Japanese | 445 (0.3%) | 495 (0.3%) | 662 (0.6%) | 92,797 (21.5%) | 101,297 (24.3%) | 110,625 (26.5%) |
| 個人その他 Individuals and others | 164,958 (99.0%) | 139,944 (98.8%) | 107,886 (98.5%) | 140,347 (32.5%) | 128,329 (30.8%) | 102,728 (24.7%) |
| 自己名義株式 Treasury stocks | 1 (0.0%) | 1 (0.0%) | 1 (0.0%) | 373 (0.1%) | 260 (0.1%) | 830 (0.2%) |
| 計 Total | 166,694 (100.0%) | 141,601 (100.0%) | 109,533 (100.0%) | 431,677 (100.0%) | 416,680 (100.0%) | 416,680 (100.0%) |

※2017.3以前は、2017.10の株式併合影響(5→1株)を考慮して算定

Prior to March 2017, calculated based on the assumption of the share consolidation in October 2017. (5 share to 1 share)

※単元未満株式含む Including fractional shares

2 所有数別状況 Distribution of shares by size of holding

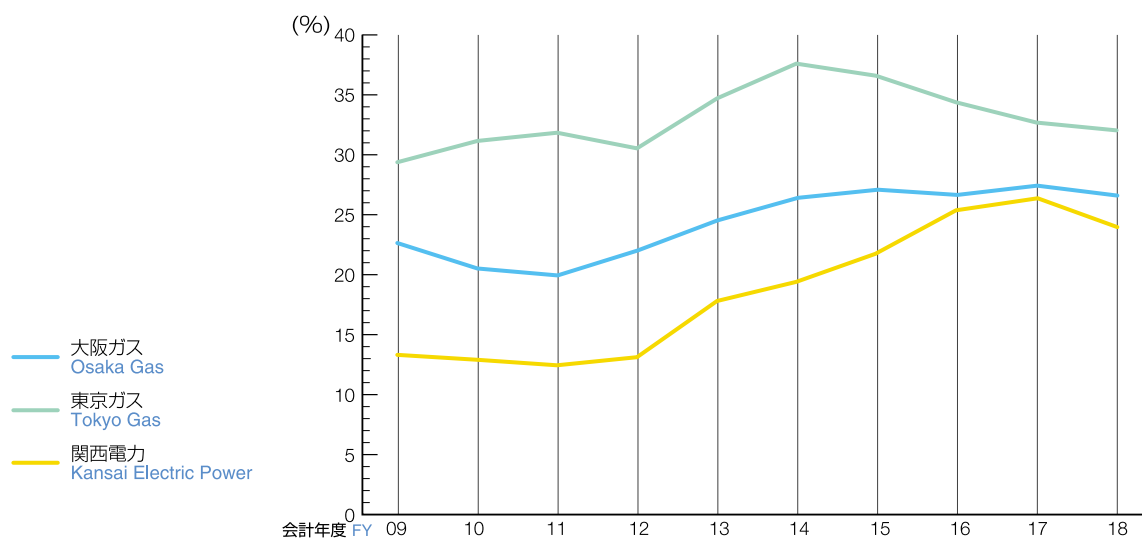
| 会計年度 FY | 株主数 Number of Shareholders | | | 所有株式数(千株) Number of Shares (thousand) | | |
|------------|----------------------------|------------------|------------------|---------------------------------------|------------------|------------------|
| | 08.3 | 13.3 | 18.3 | 08.3 | 13.3 | 18.3 |
| 100,000~ | 287 (0.2%) | 292 (0.2%) | 286 (0.3%) | 276,140 (64.0%) | 280,360 (67.3%) | 301,913 (72.5%) |
| 10,000~ | 1,062 (0.6%) | 1,062 (0.7%) | 1,049 (1.0%) | 25,993 (6.0%) | 25,313 (6.1%) | 26,258 (6.3%) |
| 1,000~ | 43,346 (26.0%) | 36,843 (26.0%) | 28,959 (26.4%) | 94,860 (22.0%) | 81,368 (19.5%) | 64,626 (15.5%) |
| ~ 999 | 121,999 (73.2%) | 103,404 (73.0%) | 79,239 (72.3%) | 34,683 (8.0%) | 29,638 (7.1%) | 23,883 (5.7%) |
| 計 Total | 166,694 (100.0%) | 141,601 (100.0%) | 109,533 (100.0%) | 431,677 (100.0%) | 416,680 (100.0%) | 416,680 (100.0%) |

※2017.3以前は、2017.10の株式併合影響(5→1株)を考慮して算定

Prior to March 2017, calculated based on the assumption of the share consolidation in October 2017. (5 share to 1 share)

※単元未満株式含む Including fractional shares

3 外国人持株比率 Percentage of shares held by non-Japanese shareholders



| 会計年度 FY | 09.3 | 10.3 | 11.3 | 12.3 | 13.3 | 14.3 | 15.3 | 16.3 | 17.3 | 18.3 |
|-------------------------------|------|------|------|------|------|------|------|------|------|------|
| 大阪ガス Osaka Gas | 22.6 | 20.5 | 20.0 | 22.0 | 24.5 | 26.4 | 27.1 | 26.7 | 27.4 | 26.6 |
| 東京ガス Tokyo Gas | 29.3 | 31.1 | 31.8 | 30.6 | 34.7 | 37.6 | 36.6 | 34.3 | 32.7 | 32.0 |
| 関西電力 Kansai Electric Power | 13.4 | 12.9 | 12.4 | 13.1 | 16.8 | 19.4 | 21.7 | 25.2 | 26.3 | 24.0 |

※単元未満株式除く Excluding fractional shares

4 配当状況 Dividends payment

| 会計年度 FY | 09.3 | 10.3 | 11.3 | 12.3 | 13.3 | 14.3 | 15.3 | 16.3 | 17.3 | 18.3 |
|---|------|------|------|------|------|------|------|------|------|------|
| 一株当たり 年間配当金 (円) Annual dividends per share (yen) | 35.0 | 35.0 | 40.0 | 40.0 | 42.5 | 45.0 | 47.5 | 50.0 | 50.0 | 50.0 |

※2017.3以前は、2017.10の株式併合影響(5→1株)を考慮して算定
Prior to March 2017, calculated based on the assumption of the share consolidation in October 2017. (5 share to 1 share)

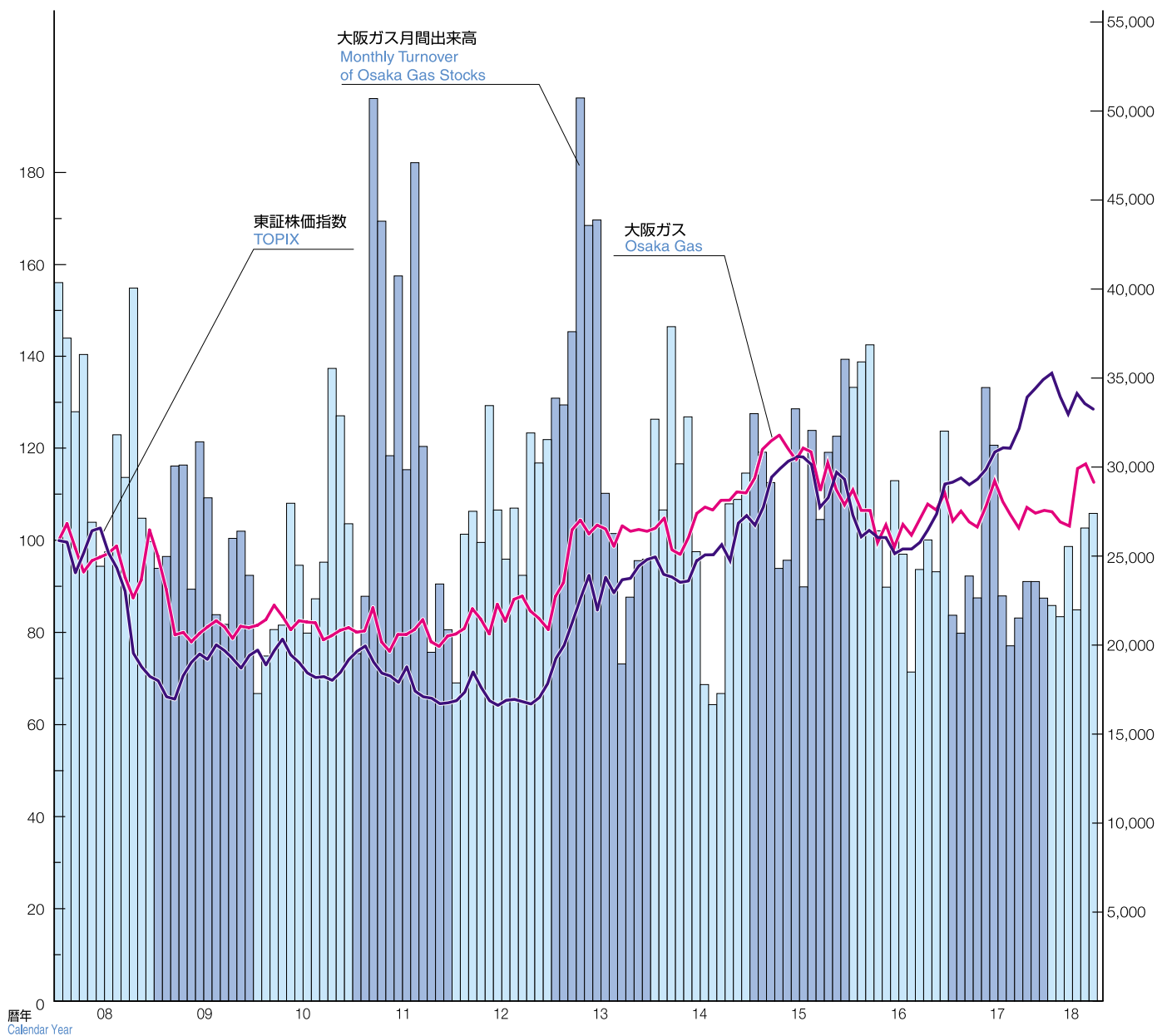
5 自己株式取得状況 Share buy-back

| 会計年度 FY | 09.3 | 10.3 | 11.3 | 12.3 | 13.3 | 14.3 | 15.3 | 16.3 | 17.3 | 18.3 |
|--|------|------|------|------|------|------|------|------|------|------|
| 自己株式 買付総額 (億円) Total value of shares repurchased (100 million yen) | 0 | 0 | 200 | 0 | 0 | 0 | 0 | 0 | 0 | 0 |

6 株価推移 Stock price fluctuation

株価インデックス Stock price index (2007年1月=100 January 2007=100)

出来高 Turnover (千株 thousand shares)



株価データ Stock price data

| 暦年 Calendar year | | 09 | 10 | 11 | 12 | 13 | 14 | 15 | 16 | 17 | 18 |
|--|---------|---------|---------|---------|---------|---------|---------|---------|---------|---------|---------|
| 大阪ガス Osaka Gas (円/株) (yen/stock) | 高値 High | 2,110.0 | 1,700.0 | 1,670.0 | 1,750.0 | 2,435.0 | 2,330.0 | 2,667.5 | 2,338.5 | 2,348.5 | 2,431.5 |
| | 安値 Low | 1,440.0 | 1,390.0 | 1,325.0 | 1,495.0 | 1,575.0 | 1,850.0 | 2,105.0 | 1,802.0 | 2,056.0 | 1,993.5 |
| 東証株価指数 TOPIX | 高値 High | 975.6 | 998.9 | 974.6 | 872.4 | 1,302.3 | 1,447.6 | 1,691.3 | 1,552.4 | 1,831.9 | 1,911.1 |
| | 安値 Low | 700.9 | 803.1 | 706.1 | 695.5 | 871.9 | 1,132.8 | 1,358.0 | 1,196.3 | 1,459.1 | 1,664.9 |
| 大阪ガス年間出来高 (千株) Annual turnover of Osaka Gas stocks (thousand) | | 311,514 | 294,251 | 380,108 | 328,548 | 389,161 | 323,830 | 356,300 | 336,060 | 288,258 | 148,232 |

※2018年は6月まで Until June 2018

※2017以前は、2017.10の株式併合影響(5→1株)を考慮して算定

Prior to 2017, calculated based on the assumption of the share consolidation in October 2017. (5 share to 1 share)

| 会計年度 FY | | 09.3 | 10.3 | 11.3 | 12.3 | 13.3 | 14.3 | 15.3 | 16.3 | 17.3 | 18.3 |
|---|--|---------|---------|---------|---------|---------|---------|---------|---------|---------|---------|
| 大阪ガス年度末終値 (円/株) Osaka Gas Stock price at Fiscal Year end (yen/stock) | | 1,540.0 | 1,675.0 | 1,660.0 | 1,660.0 | 2,070.0 | 1,955.0 | 2,513.5 | 2,162.0 | 2,115.0 | 2,099.5 |

※2017.3以前は、2017.10の株式併合影響(5→1株)を考慮して算定

Prior to March 2017, calculated based on the assumption of the share consolidation in October 2017. (5 share to 1 share)

債券格付け Bond Ratings

1 エネルギー会社の長期債格付け Ratings for long-term bond of major energy companies

| | 国 Country | R&I (格付投資情報センター) Rating and Investment Information, Inc. | ムーディーズ Moody's Investors Service | スタンダード&プアーズ Standard & Poor's |
|---|------------------|--|--|----------------------------------|
| 大阪ガス Osaka Gas | 日本 Japan | AA+ | Aa3 | AA- |
| 東京ガス Tokyo Gas | 日本 Japan | AA+ | Aa3 | AA- |
| 東京電力 Tokyo Electric Power | 日本 Japan | BBB+ | Ba2 | BB |
| 関西電力 Kansai Electric Power | 日本 Japan | A+ | A3 | —— |
| 中部電力 Chubu Electric Power | 日本 Japan | A | A3 | —— |
| ナショナルグリッド National Grid | 米国・英国 USA, UK | —— | Baa1 | A- |
| パシフィック・ガス・アンド・エレクトリック Pacific Gas & Electric | 米国 USA | —— | Baa1 | BBB |
| セントリカ Centrica | 英国 UK | —— | Baa1 | BBB+ |

2018年6月末時点。格付けの表示詳細については、各格付け会社のホームページ等を参照下さい。

As of the end of June, 2018 . Please refer to each rating company's website if details of ratings are required.

2 大阪ガスの信用格付け Credit rating of Osaka Gas

| 格付け機関 Credit rating agency | 長期債 Long-term Bond | 国内コマーシャルペーパー Domestic Commercial Paper |
|--|-----------------------|---|
| R&I (格付投資情報センター) Rating and Investment Information, Inc | AA+ | a-1+ |
| ムーディーズ Moody's Investors Service | Aa3 | —— |
| スタンダード&プアーズ Standard & Poor's | AA- | A-1+ |