

株式分析 Stock Analysis

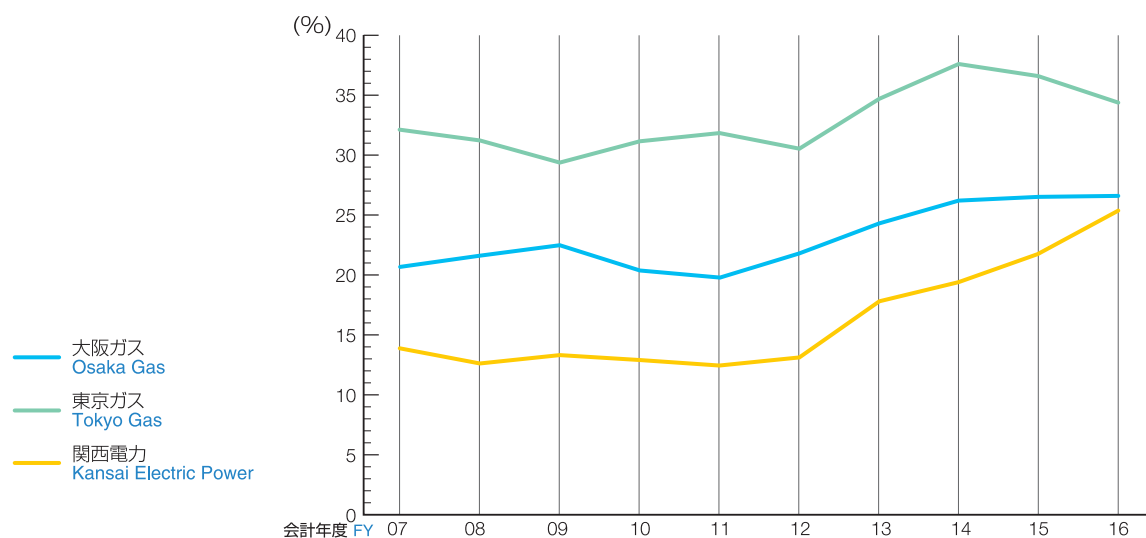
1 所有者別状況 Distribution of shares by type of shareholder

会計年度 FY	株主数 Number of Shareholders			所有株式数(千株) Number of Shares (thousand)		
	06.3	11.3	16.3	06.3	11.3	16.3
政府及び地方公共団体 Public bodies	2 (0.0%)	2 (0.0%)	2 (0.0%)	30 (0.0%)	30 (0.0%)	30 (0.0%)
銀行及び保険会社 Banks and insurance companies	220 (0.1%)	158 (0.1%)	163 (0.1%)	786,785 (35.2%)	792,552 (38.0%)	793,941 (38.1%)
証券会社 Security companies	59 (0.0%)	45 (0.0%)	53 (0.0%)	29,377 (1.3%)	19,711 (0.9%)	26,753 (1.3%)
その他の法人 Other businesses	1,311 (0.7%)	985 (0.7%)	857 (0.7%)	212,444 (9.5%)	211,791 (10.2%)	157,577 (7.6%)
外国人 Non-Japanese	412 (0.2%)	453 (0.3%)	608 (0.5%)	414,165 (18.5%)	412,489 (19.8%)	551,536 (26.5%)
個人その他 Individuals and others	189,360 (99.0%)	147,133 (98.9%)	119,113 (98.6%)	784,720 (35.1%)	645,805 (31.0%)	550,306 (26.4%)
自己名義株式 Treasury stocks	1 (0.0%)	1 (0.0%)	1 (0.0%)	8,149 (0.4%)	1,019 (0.0%)	3,257 (0.2%)
計 Total	191,365 (100.0%)	148,777 (100.0%)	120,797 (100.0%)	2,235,670 (100.0%)	2,083,397 (100.0%)	2,083,400 (100.0%)

2 所有数別状況 Distribution of shares by size of holding

会計年度 FY	株主数 Number of Shareholders			所有株式数(千株) Number of Shares (thousand)		
	06.3	11.3	16.3	06.3	11.3	16.3
1,000,000~	179 (0.1%)	184 (0.1%)	190 (0.2%)	1,308,705 (58.5%)	1,300,431 (62.4%)	1,400,545 (67.2%)
500,000~	99 (0.1%)	91 (0.1%)	108 (0.1%)	70,885 (3.2%)	64,835 (3.1%)	76,658 (3.7%)
100,000~	456 (0.2%)	419 (0.3%)	442 (0.4%)	86,270 (3.9%)	84,043 (4.0%)	90,098 (4.3%)
50,000~	675 (0.4%)	642 (0.4%)	602 (0.5%)	43,944 (2.0%)	41,170 (2.0%)	39,266 (1.9%)
10,000~	22,686 (11.9%)	18,957 (12.7%)	14,836 (12.3%)	362,310 (16.2%)	305,057 (14.6%)	242,700 (11.6%)
5,000~	25,735 (13.4%)	20,640 (13.9%)	16,330 (13.5%)	164,569 (7.4%)	130,982 (6.3%)	103,723 (5.0%)
1,000~	99,712 (52.1%)	79,448 (53.4%)	64,966 (53.8%)	190,189 (8.5%)	150,752 (7.2%)	122,268 (5.9%)
~ 999	41,823 (21.9%)	28,396 (19.1%)	23,323 (19.3%)	8,798 (0.4%)	6,130 (0.3%)	8,142 (0.4%)
計 Total	191,365 (100.0%)	148,777 (100.0%)	120,797 (100.0%)	2,235,670 (100.0%)	2,083,400 (100.0%)	2,083,400 (100.0%)

3 外国人持株比率 Percentage of shares held by non-Japanese shareholders



会計年度 FY	07.3	08.3	09.3	10.3	11.3	12.3	13.3	14.3	15.3	16.3
大阪ガス Osaka Gas	20.7	21.5	22.4	20.3	19.8	21.8	24.3	26.2	26.5	26.6
東京ガス Tokyo Gas	32.1	31.2	29.3	31.1	31.8	30.6	34.7	37.6	36.6	34.3
関西電力 Kansai Electric Power	13.8	12.7	13.4	12.9	12.4	13.1	16.8	19.4	21.7	25.2

4 配当状況 Dividends payment

会計年度 FY	07.3	08.3	09.3	10.3	11.3	12.3	13.3	14.3	15.3	16.3
一株当たり 年間配当金 (円) Annual dividends per share (yen)	7.0	7.0	7.0	7.0	8.0	8.0	8.5	9.0	9.5	10.0

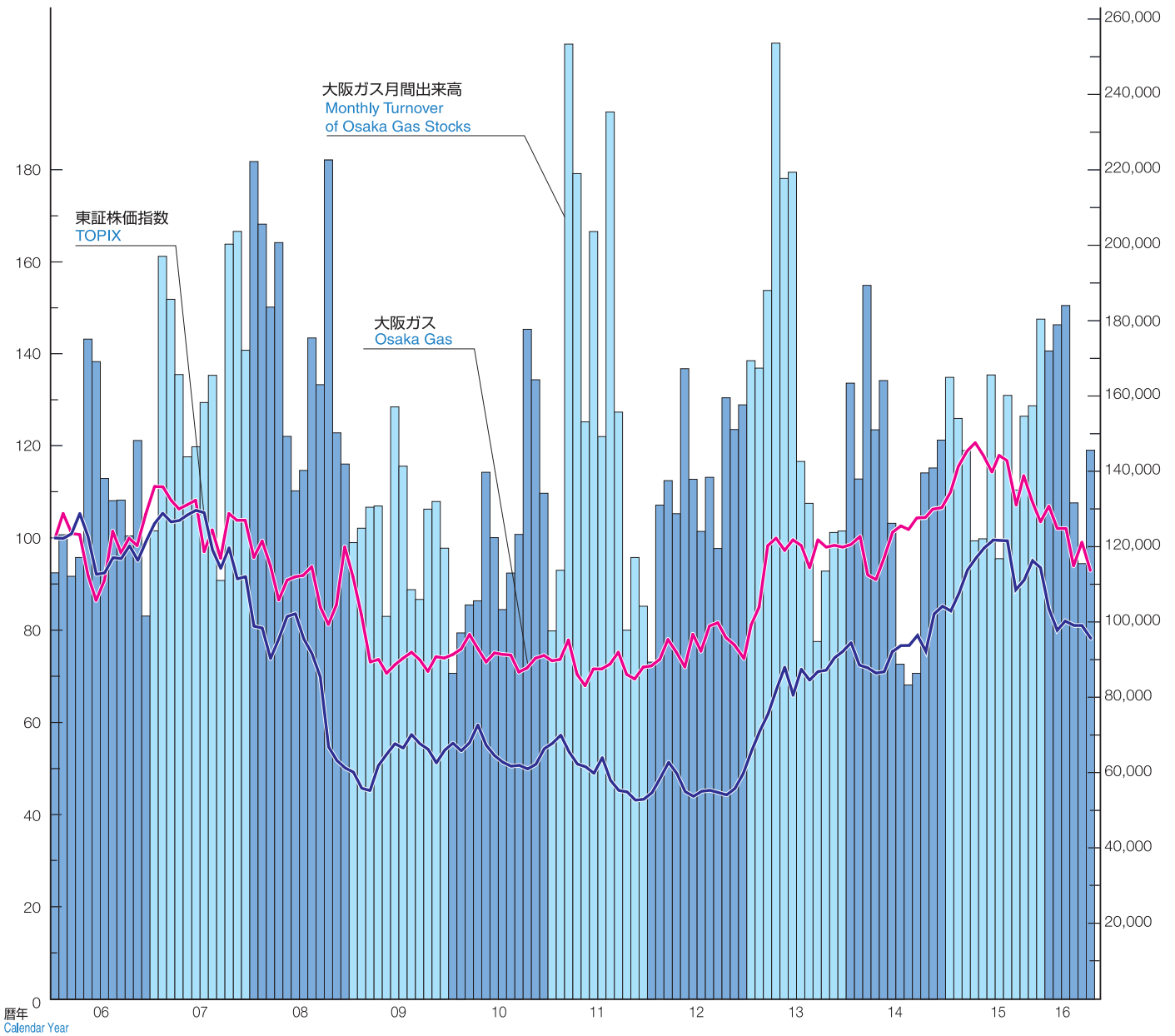
5 自己株式取得状況 Share buy-back

会計年度 FY	07.3	08.3	09.3	10.3	11.3	12.3	13.3	14.3	15.3	16.3
自己株式 買付総額 (億円) Total value of shares repurchased (100 million yen)	0	300	0	0	200	0	0	0	0	0

6 株価推移 Stock price fluctuation

株価インデックス Stock price index (2006年1月=100 January 2006=100)

出来高 Turnover (千株 thousand shares)



株価データ Stock price data

暦年 Calendar year		06	07	08	09	10	11	12	13	14	15	16
大阪ガス Osaka Gas (円/株) (yen/stock)	高値 High	460	513	459	422	340	334	350	487	466	533.5	464.7
	安値 Low	344	394	282	288	278	265	299	315	370	421.0	360.4
東証株価指数 TOPIX	高値 High	1,783.72	1,816.97	1,430.47	975.59	998.90	974.63	872.42	1,302.29	1,447.58	1,691.29	1,509.67
	安値 Low	1,458.30	1,437.38	746.46	700.93	803.12	706.08	695.51	871.88	1,132.76	1,357.98	1,196.28
大阪ガス年間出来高 (千株) Annual turnover of Osaka Gas stocks (thousand)		1,587,410	1,979,450	2,099,061	1,557,570	1,471,253	1,900,542	1,642,738	1,945,807	1,619,152	1,781,502	937,023

※2016年は6月まで Until June 2016

会計年度 FY	06.3	07.3	08.3	09.3	10.3	11.3	12.3	13.3	14.3	15.3	16.3
大阪ガス年度末終値 (円/株) Osaka Gas Stock price at Fiscal Year end (yen/stock)	428	457	398	308	335	332	332	414	451	502.7	432.4