

株式分析 Stock Analysis

1 所有者別状況 Distribution of shares by type of shareholder

会計年度 FY	株主数 Number of Shareholders			所有株式数(千株) Number of Shares (thousands)		
	09.3	14.3	19.3	09.3	14.3	19.3
政府及び地方公共団体 Public bodies	3 (0.0%)	2 (0.0%)	2 (0.0%)	7 (0.0%)	6 (0.0%)	6 (0.0%)
銀行及び保険会社 Banks and insurance companies	147 (0.1%)	152 (0.1%)	124 (0.1%)	152,103 (35.2%)	144,951 (34.8%)	169,143 (40.6%)
証券会社 Security companies	57 (0.0%)	48 (0.0%)	40 (0.0%)	3,769 (0.9%)	7,645 (1.8%)	7,981 (1.9%)
その他の法人 Other businesses	1,057 (0.7%)	894 (0.7%)	775 (0.7%)	41,555 (9.6%)	33,368 (8.0%)	29,812 (7.2%)
外国人 Non-Japanese	513 (0.3%)	522 (0.4%)	670 (0.6%)	96,772 (22.4%)	109,318 (26.2%)	110,638 (26.6%)
個人その他 Individuals and others	160,762 (98.9%)	130,024 (98.8%)	102,482 (98.5%)	136,858 (31.7%)	120,950 (29.0%)	98,234 (23.6%)
自己名義株式 Treasury stocks	1 (0.0%)	1 (0.0%)	1 (0.0%)	613 (0.1%)	443 (0.1%)	867 (0.2%)
計 Total	162,540 (100.0%)	131,643 (100.0%)	104,094 (100.0%)	431,677 (100.0%)	416,680 (100.0%)	416,680 (100.0%)

※2017.3以前は、2017.10の株式併合影響(5→1株)を考慮して算定

Prior to March 2017, calculated based on the assumption of the share consolidation in October 2017. (5 share to 1 share)

※単元未満株式含む Including fractional shares

2 所有数別状況 Distribution of shares by size of holding

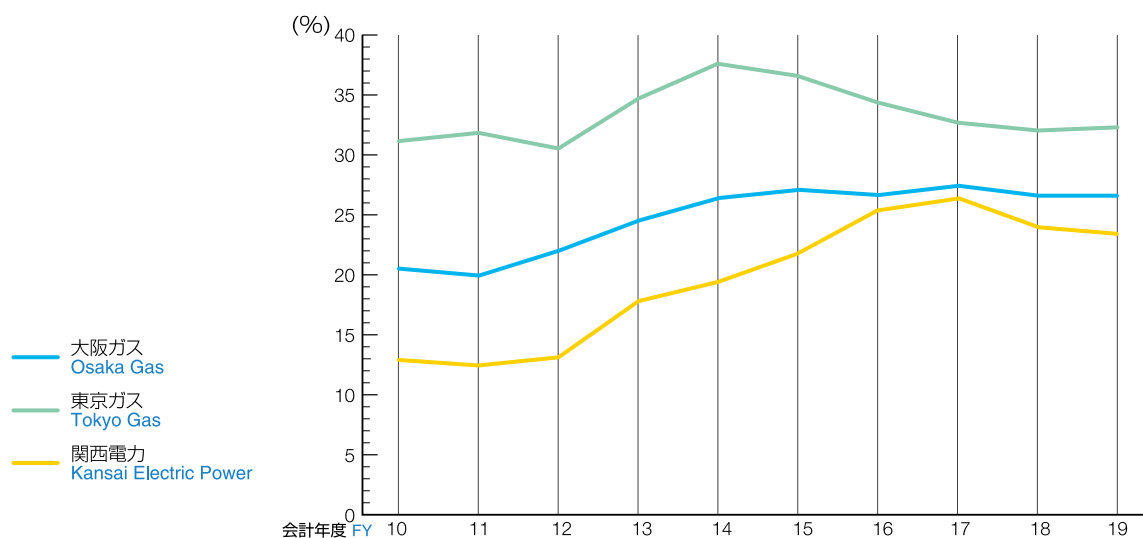
会計年度 FY	株主数 Number of Shareholders			所有株式数(千株) Number of Shares (thousands)		
	09.3	14.3	19.3	09.3	14.3	19.3
100,000株 Shares ~	274 (0.2%)	282 (0.2%)	273 (0.3%)	278,840 (64.6%)	286,821 (68.8%)	306,420 (73.5%)
10,000株 Shares ~	1,096 (0.7%)	1,051 (0.8%)	1,019 (1.0%)	26,832 (6.2%)	25,249 (6.1%)	25,736 (6.2%)
1,000株 Shares ~	42,067 (25.9%)	34,549 (26.2%)	27,657 (26.6%)	92,388 (21.4%)	76,459 (18.3%)	61,812 (14.8%)
~ 999株 Shares	119,103 (73.3%)	95,761 (72.7%)	75,145 (72.2%)	33,616 (7.8%)	28,151 (6.8%)	22,712 (5.5%)
計 Total	162,540 (100.0%)	131,643 (100.0%)	104,094 (100.0%)	431,677 (100.0%)	416,680 (100.0%)	416,680 (100.0%)

※2017.3以前は、2017.10の株式併合影響(5→1株)を考慮して算定

Prior to March 2017, calculated based on the assumption of the share consolidation in October 2017. (5 share to 1 share)

※単元未満株式含む Including fractional shares

3 外国人持株比率 Percentage of shares held by non-Japanese shareholders



会計年度 FY	10.3	11.3	12.3	13.3	14.3	15.3	16.3	17.3	18.3	19.3
大阪ガス Osaka Gas	20.5	20.0	22.0	24.5	26.4	27.1	26.7	27.4	26.6	26.6
東京ガス Tokyo Gas	31.1	31.8	30.6	34.7	37.6	36.6	34.3	32.7	32.0	32.3
関西電力 Kansai Electric Power	12.9	12.4	13.1	16.8	19.4	21.7	25.2	26.3	24.0	23.4

※単元未満株式除く Excluding fractional shares

4 配当状況 Dividends payment

会計年度 FY	10.3	11.3	12.3	13.3	14.3	15.3	16.3	17.3	18.3	19.3
一株当たり 年間配当金 (円) Annual dividends per share (yen)	35.0	40.0	40.0	42.5	45.0	47.5	50.0	50.0	50.0	50.0

※2017.3以前は、2017.10の株式併合影響(5→1株)を考慮して算定

Prior to March 2017, calculated based on the assumption of the share consolidation in October 2017. (5 share to 1 share)

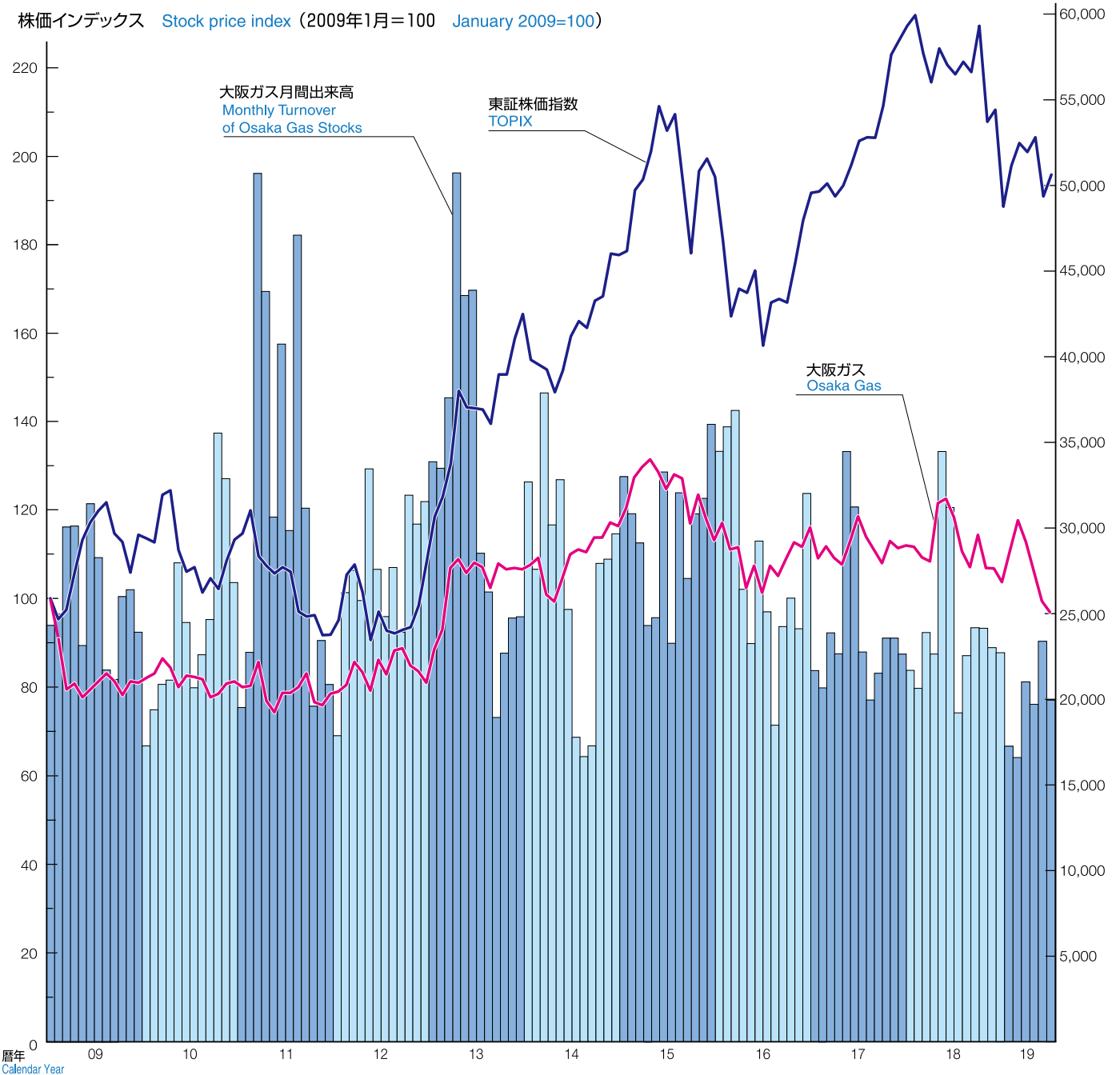
5 自己株式取得状況 Share buy-back

会計年度 FY	10.3	11.3	12.3	13.3	14.3	15.3	16.3	17.3	18.3	19.3
自己株式 買付総額 (億円) Total value of shares repurchased (100 million yen)	0	200	0	0	0	0	0	0	0	0

6 株価推移 Stock price fluctuation

株価インデックス Stock price index (2009年1月=100 January 2009=100)

出来高 Turnover (千株 thousand shares)



株価データ Stock price data

暦年 Calendar year		10	11	12	13	14	15	16	17	18	19
大阪ガス Osaka Gas (円/株) (yen/share)	高値 High	1,700.0	1,670.0	1,750.0	2,435.0	2,330.0	2,667.5	2,338.5	2,348.5	2,431.5	2,342.0
	安値 Low	1,390.0	1,325.0	1,495.0	1,575.0	1,850.0	2,105.0	1,802.0	2,056.0	1,993.5	1,832.0
東証株価指数 TOPIX	高値 High	998.9	974.6	872.4	1,302.3	1,447.6	1,691.3	1,552.4	1,831.9	1,911.1	1,630.7
	安値 Low	803.1	706.1	695.5	871.9	1,132.8	1,358.0	1,196.3	1,459.1	1,664.9	1,471.2
大阪ガス年間出来高 (千株) Annual turnover of Osaka Gas stocks (thousands)		294,251	380,108	328,548	389,161	323,830	356,300	336,060	288,258	148,232	120,076

※2019年は6月まで Until June 2019

※2017以前は、2017.10の株式併合影響(5→1株)を考慮して算定

Prior to 2017, calculated based on the assumption of the share consolidation in October 2017. (5 share to 1 share)

会計年度 FY	10.3	11.3	12.3	13.3	14.3	15.3	16.3	17.3	18.3	19.3
大阪ガス年度末終値 (円/株) Osaka Gas Stock price at Fiscal Year end (yen/share)	1,675.0	1,660.0	1,660.0	2,070.0	1,955.0	2,513.5	2,162.0	2,115.0	2,099.5	2,184.0

※2017.3以前は、2017.10の株式併合影響(5→1株)を考慮して算定

Prior to March 2017, calculated based on the assumption of the share consolidation in October 2017. (5 share to 1 share)

債券格付け Bond Ratings

1 エネルギー会社の長期債格付け Ratings for long-term bond of major energy companies

	国 Country	R&I (格付投資情報センター) Rating and Investment Information, Inc.	ムーディーズ Moody's Investors Service	スタンダード&プアーズ Standard & Poor's
大阪ガス Osaka Gas	日本 Japan	AA+	Aa3	AA-
東京ガス Tokyo Gas	日本 Japan	AA+	Aa3	AA-
東京電力 Tokyo Electric Power	日本 Japan	BBB+	Ba2	BB+
関西電力 Kansai Electric Power	日本 Japan	A+	A3	——
中部電力 Chubu Electric Power	日本 Japan	A+	A3	——
ナショナルグリッド National Grid	米国・英国 USA, UK	——	Baa1	A-
パシフィック・ガス・アンド・エレクトリック Pacific Gas & Electric	米国 USA	——	WR	D
セントリカ Centrica	英国 UK	——	Baa1	BBB

2019年6月末時点。格付けの表示詳細については、各格付け会社のホームページ等を参照下さい。

As of the end of June, 2019. Please refer to each rating company's website if details of ratings are required.

2 大阪ガスの信用格付け Credit rating of Osaka Gas

格付け機関 Credit rating agency	長期債 Long-term Bond	国内コマーシャルペーパー Domestic Commercial Paper
R&I (格付投資情報センター) Rating and Investment Information, Inc	AA+	a-1+
ムーディーズ Moody's Investors Service	Aa3	——
スタンダード&プアーズ Standard & Poor's	AA-	A-1+